



- Specialize in data collection systems for the manufacturing and distribution industries
- Developed ToolWorx Bridge™ to provide customized, *not custom*, data collection solutions that are affordable, easy to use, and expandable
- RFID Authorized Honours Partner with Intermecc; Microsoft Independent Software Vendor (ISV) and VBA Business Partner
- Principals have over 30 years experience in Automated Data Collection

TWTrack™ Container Tracking System

- A software system designed to help companies track and manage returnable containers. TWTrack™ is a complete data collection system tailored to a company's, facilities, or user's unique requirements to manage the expensive cost of returnable containers.
- Can be linked to any commercial or custom ERP / DRP system on any hardware platform or run standalone.
- The system can be enhanced easily as business needs change without changing the underlying software.
- Any authorized person can view container status, location, and inventory information within a facility or throughout the corporation, via a LAN, WAN or over the Internet.
- Collects data automatically from scanners, both RFID tags and bar codes, at the receiving and shipping docks or in the yard.
- Runs under Windows XP/200x using Microsoft's Component Object Model (COM) standards for maximum longevity and flexibility

The screenshot shows a 'Container Information' dialog box. At the top, there is a table with two columns: 'Container ID' and 'Asset Tag'. The first row is selected and highlighted in blue.

Container ID	Asset Tag
1000000	32081
1000001	48019
1000002	51384
1000003	67709

Below the table, there are several input fields for the selected container (ID: 1000000, Asset Tag: 32081):

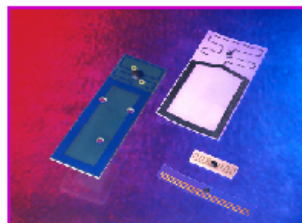
- ID: 1000000
- Asset Tag: 32081
- Type: CYL (dropdown)
- Grade: A
- Status: ON HOLD (dropdown)
- Group: GAS (dropdown)
- Owner: TOOLWORX (dropdown)
- Expiration Date: 08/11/2001 12:35 A
- Add Date: 02/11/2000 12:35 A
- Last Moved Date: 07/01/2000 06:01 A
- Last Moved By: JOHN
- Last Location: TESTING
- Process: NONE (dropdown)
- Location: RECEIVING (dropdown)
- Material: SOLV (dropdown)

At the bottom, there are two checkboxes: Log Movements and Filled. There are also buttons for 'Find...', 'Tags...', 'OK', and 'Cancel'.

TWTrack™ Views/Reports

- Historical container movement / audit trail
- Container inventory status / locator
- Maintenance history
- Scheduled testing history

TWTrack™ Hardware Support



ToolWorx Information Products, Inc.
7994 Grand River • Brighton, MI 48114-9304
Phone: (810) 220-5115 • Fax: (810) 220-5118
www.toolworx.com