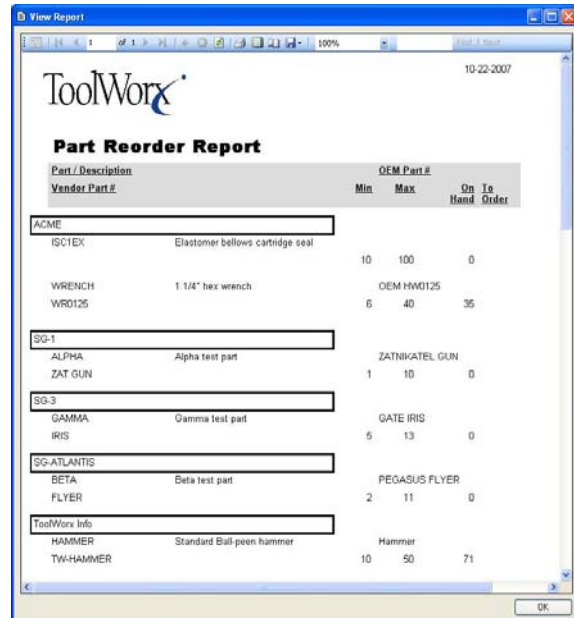




- ❖ Specialize in data collection systems for the manufacturing and distribution industries
- ❖ Developed ToolWorx Bridge™ to provide customized, *not custom*, data collection solutions that are affordable, easy to use, and expandable
- ❖ RFID Authorized Honours Partner with Intermec; Microsoft Partner
- ❖ Principals have over 25 years experience in Automated Data Collection

## *TWTool™ Tool Crib Inventory Management System*

- ❖ A software system designed to help companies track tool crib parts and manage the activity of those parts as they get used
- ❖ Two independent modules: Crib Parts Tracking and Tool Tracking
- ❖ Can be linked to any commercial or custom ERP / DRP system on any hardware platform
- ❖ Maintains perpetual inventory of all parts so you can check inventory levels at any time
- ❖ Set min and max reorder levels on inventory to generate Reorder and Inventory Turns reports
- ❖ TWTool™ can run on both the mobile handheld and PC or entirely on a PC
- ❖ Runs under Windows XP/200x using Microsoft software standards for maximum longevity and flexibility



ToolWorx Information Products, Inc.  
7994 Grand River • Brighton, MI 48114-9304  
Phone: (810) 220-5115 • Fax: (810) 220-5118  
[www.toolworx.com](http://www.toolworx.com)

## *TWTool™ Views/Reports*

- ❖ Parts reorder report
- ❖ Part usage report
- ❖ Inventory turns reports
- ❖ Tools checked out by employee or tool id reports
- ❖ Overdue tools report
- ❖ Transactions by date, employee, or part number
- ❖ Current status of parts or tools

## *TWTool™ Hardware Support*



ToolWorx Information Products, Inc.  
7994 Grand River • Brighton, MI 48114-9304  
Phone: (810) 220-5115 • Fax: (810) 220-5118  
[www.toolworx.com](http://www.toolworx.com)